

NORWICH & DISTRICT SOCIETY OF MODEL ENGINEERS

Founded 1933

Incorporated 1967

---

# **eBULLETIN**

## ***JUL/AUG 2017***

---



*Mallard seen at Eaton Park*

**More inside...**

## DIRECTORS MEETINGS – RELOCATED TO LAST PAGE



### *Cover story*

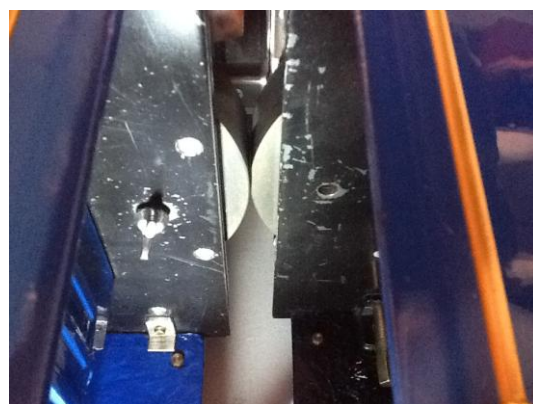
On the cover this issue is a fine 5" steam outline replica of Mallard that Brian Parker brought to Eaton Park for a run on the ground level a few weeks back. Brian explains,

*"Here are some facts make, of them what you will.*

*It was built but not completed by a good friend Roy Mosley. He suffered a brain tumour and asked if I would complete it for him. This I did in a hurry and it was the centre of attraction at a party we held for him at our track just before he died. The rush job explains the lack of details on the smoke box front.*



*The body of the loco and tender are glass fibre. Roy made the moulds himself. There is nothing in the loco; it is pushed by the tender which has four motors, one for each axle, powered by two 50 ah batteries. The biggest problem was keeping the loco on the track. Many extra weight solutions were tried but all failed. In the end I discovered the connecting link was lifting and pushing the loco off the track. This was replaced with a device (see photo, right) which solved the problem. Of all my locos it is my pride and joy!"*



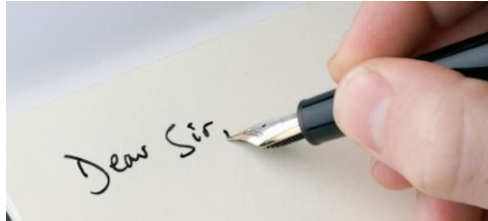


# BOILER TESTING

A service for members – by arrangement.

Contact the Chairman.

## LETTERBOCKS



This month the eBulletin postbag was swamped by a letter from a Mr Trellis of North Walsham, who writes,

*Dear Humph,*

*Brexit has got us all concerned, but will it lead to a resurgence in Imperial thread forms? I am a great fan of Whitworth and will this thread enjoy a renaissance now that the metric invader may be vanquished? I am convinced that children today would be a lot happier using Whitworth bolts and, furthermore,.. (contd. p26)*

What do you think? Have you got a letter to send to the eBulletin?

### BBQ 2017

Here's new member Ian Carter with his 5" class 66 enjoying a circuit on the evening of the BBQ at Eaton Park in early July 2017. Fine looking engine in a contemporary livery.



## ARE YOU A MEMBER OF THE MEMBERS AREA?

ALL MEMBERS OF THE NDSME MAY GAIN ACCESS TO THE PRIVATE MEMBERS AREA OF THE NDSME WEBSITE. TO OBTAIN YOUR LOGIN DETAILS, CONTACT [webteam@ndsme.co.uk](mailto:webteam@ndsme.co.uk) WITH YOUR MEMBERSHIP DETAILS

### **Spotted on Youtube**

How To Make Your Own Garden Monorail (And A Set Of Mono-Rail Points)

<https://www.youtube.com/watch?v=vqmyaR9XnaY>

### **IMPORTANT NOTICE**

Please note that the NDSMEs insurance policy does NOT cover any members' locos or assets stored at Eaton Park. Members should ensure that their own insurances cover this eventuality, should they wish to store any locos, rolling stock or other items at the Society premises.

## **NOTICE**

### **Norwich and District Society of Model Engineers Limited**

The Annual General Meeting is being rearranged.

The Agenda and supporting papers will be posted to all members so that they arrive 21 days before the rearranged meeting (which is the required notice period).

At the AGM, all directors, the company secretary and the treasurer will offer their resignation and also offer themselves for re-election. This will be voted on by the members present and by proxy.

If there are any nominations for the posts of director, company secretary or treasurer they need to be sent to the company secretary or any director by Monday July 31<sup>st</sup> 2017 at the latest in order for them to be printed as they must be sent out with the agenda.

If any member has a resolution they would like to propose they need to be sent to the company secretary or any director by the above date at the latest in order for them to be printed as they must be sent out with the agenda.

The business at the meeting will be conducted strictly in accordance with the agenda and after the close of the meeting there will be an opportunity for members to ask any questions.

## COMEDY CORNER



### The Engineer Who Retired

There was an engineer who had an exceptional gift for fixing all things mechanical. After serving his company loyally for over 30 years, he happily retired. Several years later the company contacted him regarding a seemingly impossible problem they were having with one of their multi-million dollar machines. They had tried everything and everyone else to get the machine fixed, but to no avail. In desperation, they called on the retired engineer who had solved so many of their problems in the past. The engineer reluctantly took the challenge.

He spent a day studying the huge machine. At the end of the day, he marked a small "x" in chalk on a particular component of the machine and proudly stated, "This is where your problem is".

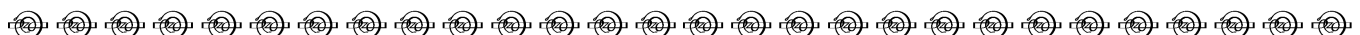
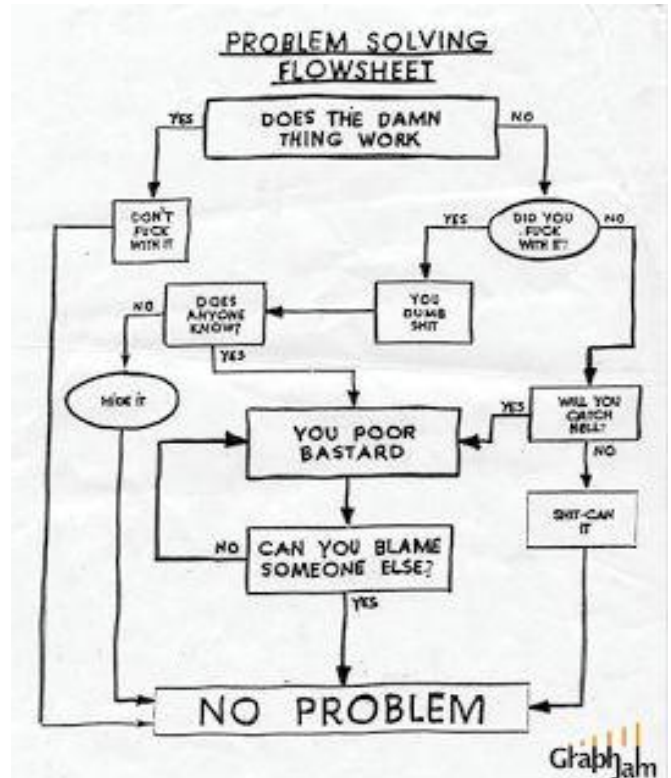
The part was replaced and the machine worked perfectly again. The company received a bill for \$50,000 from the engineer for his service. They demanded an itemized accounting of his charges.

The engineer responded briefly:

One chalk mark: \$1

Knowing where to put it: \$49,999

It was paid in full and the engineer retired again in peace.



## **HSG216 and the NDSME**

At the recent EGM, the Society adopted HSG216 as the guidance for all operations involving carrying non-members on the two railways at the park. If you are involved in any way with public operations, you should familiarise yourself with this document. It is currently available online at

<http://www.vulcan.works/media/hsg216.pdf>

and is also available on the Southern Federation website or in our members area. A copy is also kept at the clubhouse.



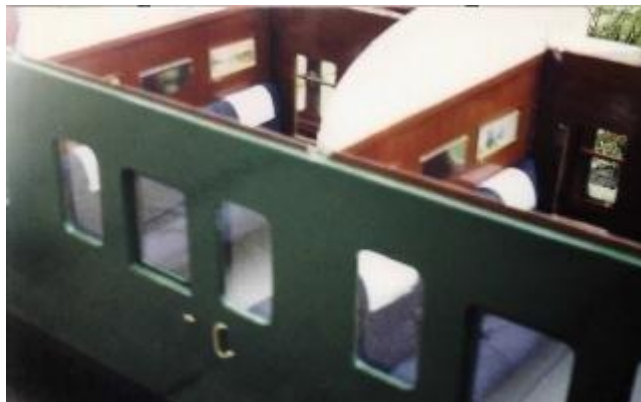
## ***Roundup – a peek into other society journals and onlines***

A photo here from the website of *Northampton SME* showing two familiar faces at EP.

We get around!



And from the *Wortley Top Forge Model Engineers* website is this rather delightful 2-BIL emu in 1/8<sup>th</sup> scale



Check out the fully detailed interior! The full article about this model is available at <http://www.wortleymes.com/2bilp1.htm> It's well worth a read too.

NDSME – affiliated to the Southern Federation and now the Northern Association – for the benefit of all our members.

# Forthcoming Events

01 August 17	Invitation to Parklands, Hemsby
09 August 17	AGM Eaton Park 1930
13 Sept 17	<i>Bits and Pieces</i> Eaton Park
08 Oct 17	<i>Children in Need</i> Fundraiser
11 Oct 17	<i>East Anglian Air Ambulance</i> Eaton Park

If you have any suggestions for future meetings, let us know. Remember there is still a vacancy for Meetings Organiser too! Email the chairman if you'd like to help.

## A mystery picture – last month

Last months pictures were of the Leziate Sand Quarry, Middleton Towers just outside Kings Lynn and were taken in 1960. They were linked at the time to the Kings Lynn – Swaffham line. A stub now links the Quarry to the national system at Kings Lynn. Now owned by *Sibelco*, two or more trains a day supply the fine grain sand to Britain's biggest glass factories.

## Almost there!



Here's the A3 having a test steaming recently. The valve timing has now been corrected and there are just a few misc. leaks to be solved before it can have a steam test.



## **Some Notes on the Real A3 Loco, supplied by Bill Rout**

The locomotive we see here is a depiction of the LNER A3 class pacific No 4480 “Enterprise” and is modelled in the livery it carried during the 1920s and 30s.

The original locomotive was outshopped from the Doncaster works of the then recently formed LNER in August 1923 and was one of the earlier examples of the large class of A1 Pacific locomotives that had been designed by Nigel Gresley for the GNR in 1922. *Enterprise* was constructed as part of Doncaster works order 297 and carried works number 1572. When released to traffic at Grantham shed it carried a GNR number, 1480. This was quickly changed to 1480N in the early LNER renumbering scheme and its livery was LNER Apple Green with black and white lining. A further renumbering to the one seen here (4480) was carried out in April 1925.

Externally *Enterprise* continued to run in this condition until it was painted wartime unlined black in February 1943 and later renumbered 111 under the LNER 1946 renumbering scheme in May of that year. A change to long travel valve gear effected in 1925 caused it to be reclassified to class A3 at that time.

*Enterprise* passed into BR ownership in January 1948 shortly after again receiving LNER lined Apple Green livery in November 1947. Under BR, *Enterprise* carried BR lined blue livery from October 1949, when it also received its BR number, 60111. A final change to BR lined Brunswick green was effected in March 1953.

*Enterprise* was, for the majority of its working life, allocated to depots in the southern division of the LNER (and later BR Eastern Region) and was a familiar sight working between Kings Cross, York and Leeds. In the mid 1920's *Enterprise* spent a short period working from Carlisle to Edinburgh before returning south once again. A longer spell during the 1950's saw *Enterprise* allocated to Neasden and Leicester Central depots working between Marylebone and Sheffield.

Apart from a casual repair at Cowlairs works in Glasgow during its time at Carlisle, *Enterprise* received its overhauls and repairs at Doncaster works. Other than the modification to its valve gear in 1925, *Enterprise* was little altered during its career until quite late in its life. Originally it was fitted for right hand drive (as depicted in the model) but was converted to left hand drive in March 1953. A double chimney was fitted in June 1959 and trough smoke deflectors fitted rather late in the day in April 1962.

*Enterprise* was withdrawn from traffic from Grantham shed on 29<sup>th</sup> December 1962 and was cut up at Doncaster in April 1963 after a service life just short of 40 years.

## **This month's mystery picture.**

What is this loco? What is the connection with Eaton Park?





## Out and about

### "New" technology at Eaton Park.

Here, one of our members ponders the new-fangled device and wonders where the displaced railway policeman has gone! >



<Seconds later the express thundered through!

### **Health and Safety Fails**

No 1 in an occasional series

Spotted when the PW hut was opened up one morning. Naughty!



Do you know somewhere we could visit on one of our monthly meetings ? Contact the chairman if you have any ideas and we will do our best to arrange it if possible...



### **NDSME directors (committee) and officers as at July 2017**

President	Neville Gower	Company Sec.	Jim McDonell
Chairman	Barry Fane	Membership Sec.	Allan Shirley
Treasurer	Jim McDonell	Publicity	Mark Rhodes

Other directors: Peter King, Dave Beeken, Roger Montgomery, Mike Riches and Philip Moore.

Bulletin distribution, *digital* – Allan Shirley, *hard copy* – Philip Moore. There are a number of other roles, such as meetings organiser, that need filling. Contact Barry Fane if you can help. The email is [chairman@ndsme.co.uk](mailto:chairman@ndsme.co.uk)



### *A message from the membership secretary...*

*Things are relatively quiet on the membership front at the moment. The good news is that the club's membership numbers are gradually increasing and the number now stands at 94. The age profile, however, remains much the same so we still need to tackle the problem of attracting a younger membership group. Any ideas here are welcome!*

*I still have a few cards waiting to be passed on because not everyone supplied a SAE. I plan to deal with this soon when the Notice of the AGM is sent out.*

*Allan*

## **For Sale For Sale For Sale**

**Pete Otley** still has lots of model railway stuff for sale as he runs down his shop. Model Railways - OO Gauge & N.Gauge All Construction materials including Scatter materials, Flock, Static Grass, Grass Mats, Hedge Foliage, Tree Foliage, Back scenes, Super quick Buildings, Figures in all Gauges, Dapol Plastic Kits, Knightwing, N Gauge Plastic kits, Model Plants, Various Vinyl

Decals, Trackside Decals, Sankey Signs, Plasticard in White & Black, Brick Paper, Grain of wheat Bulbs, Grain of rice Bulbs, Various colour Led's, Brick embossed plastic sheets, PD Marsh Figures & Station Accessories, OO Gauge Canal boat Kits, Glues & Adhesives etc.



Building Materials – Piano Wire, Brass Wire, K&S Metal Extrusions (Brass Copper & Aluminium Rod, Tube, Sheet etc., Plastruct Plastic Extrusions, Balsa wood sheet Strips & Blocks, Mahogany Strip wood, Spruce Strip wood, Obechi Strip wood, Craft Tools, Foam Board

Plus a large range of model Boat & Model Aircraft accessories including Brass propellers, Propshafts etc., and a large range of vinyl Lettering & Decals for all types of models.

Contact Pete on 01692 652960



## **Summary of the Directors Meeting July 2017 at Eaton Park.**

Due to illness, no meeting was held in July

## **Other Notices**

**Parklands Railway** (Hemsby) – open day for NDSME members. Tuesday 1st August, 1430 onwards.

**STOP PRESS STOP PRESS STOP PRESS**

**Brian Baker advises he has some extra items for disposal**

An almost complete set of *Holmside* 71/4 gauge 0-6-0 casting, including wheels, cylinders stretchers chimney smokebox etc. All untouched £400 to club members (check Blackgates or Reeves prices)

.A set of 71/4 Lion, (Titfield Thunderbolt) Wheels and 2 off cylinder castings, with LBSC drawings. the old loco committee have 7 1/4 drawings £300



A working 5 inch gauge "*Canterbury Lamb*", a Canterbury & Whitstable Invicta class loco, with current hydraulic certificate, but needs a steam ticket. The loco needs tidying, and perhaps repainting (see photos) £1500



I also have the main wheel castings for a 5 inch Stirling single, price to be confirmed.

A part finished Stuart double 10, with parts & drawings to complete £200

Rob Roy, with boiler certificate, which is more or less complete, except for the tanks & cab, and has been dismantled for painting. nicely built, by an old friend, the loco has run on air, with drawings. £900

Brian's contact details above.

## Parklands Miniature Railway

### Invitation Day

This year we are holding our invitation day on Tuesday 1st August, when we hope you can come to see the railway operating for your enjoyment. We will have different trains and locomotives running during the afternoon from 2.30 pm, with activity stopping at 6.30 pm.

Parklands is a delightful 7¼ gauge railway, ¾ of a mile long, not normally open to visitors, so it's your chance to visit, ride & watch the trains in operation. Although we do have narrow gauge locomotives on shed, and there is a new one to see this year, our main stock is of standard gauge locomotives, and its quite likely that you will see an LMS Duchess, or a Black Five or two as well as a dock tank, LNER A3, BR Britannia, or a Class Two, and the GWR has several 0-6-0 tanks. Although not all may be running at once, it is a chance to compare performances. We use scale passenger & freight stock, whilst having some "Toast rack Coaches" that offer a more comfortable ride. We make no charge for rides, but donations towards maintenance costs are always welcome, look for the "white lamps" on Parklands station.

Later on in the afternoon, the Witheridge Family will be operating their Barbeque to satisfy the demands of the inner man, women & children. We will also arrange for the ice cream van to make a special visit.

The Parklands Holiday Village site is in North Road, Hemsby, NR294HA, and we ask that you observe the site speed limit, and park sensibly on the lower part of the field. Please supervise any children you bring along carefully when on site.

This year we have all been working hard on the railway, with lots of small improvements, as well the completion of our "wood for plastic" sleeper programme, so please come and join us for a ride (or two) on Parklands Railway, relive the golden age of steam, and spot the changes.

Brian Baker

leighsteamer@btinternet.com